

**LA PHILHARMONIE DE PARIS**

**FICHES TECHNIQUES**

**PHASE PRO**  
**10 AVRIL 2025**

## ESCALIER SUD

PRE01	4
PRE02 / 03	6

## CIRCULATIONS

ST02	9
------	---

## ENTREE PRINCIPALE

UP01	11
PRE04	13

## PARVIS SUD

PRE01	16
-------	----

## ENTREE DES ENFANTS

PR20	19
------	----

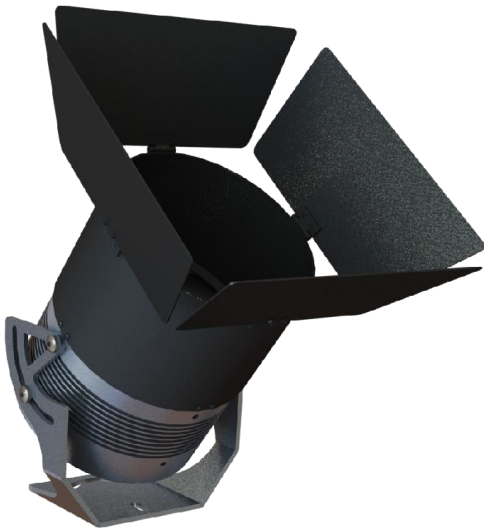
**ESCALIER SUD**

TYPE : PRE01  
EMPLACEMENT : ESCALIER SUD

A CONFIRMER SUR PROTOTYPE

ODEU **VULCANO 200**  
Philharmonie

MADE IN FRANCE



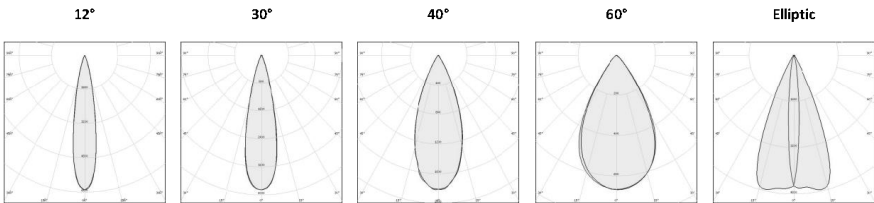
DONNÉES TECHNIQUES / TECHNICAL DATA

	Version Monochrome	Version RGBW	Version TW
Température de Couleur / Color Temperature	<input type="checkbox"/> 2200K <input type="checkbox"/> 2700K <input checked="" type="checkbox"/> 3000K	<input type="checkbox"/> RGBW X000K	<input type="checkbox"/> TW 2200K-5000K
Puissance / Power	50W	50W	50W
Flux Source / Flux Source	6000lm	1800lm	6000lm
Angle d'éclairage / Beam Angle	<input type="checkbox"/> 12° <input checked="" type="checkbox"/> 30° <input type="checkbox"/> 40° <input type="checkbox"/> 60° <input type="checkbox"/> Elliptic		
Pilotage / Control	<input checked="" type="checkbox"/> DALI <input type="checkbox"/> DMX-RDM <input type="checkbox"/> CASAMBI		
Alimentation / Voltage	230VAC		
IRC / CRI	80		
Matériau / Material	Aluminium		
Finition / Finish	<input type="checkbox"/> Grey anodized <input type="checkbox"/> Powder coated (RAL xxxx)		
Protection (IP - IK - Classe)	IP66		
Poids / Weight	5kg		

Configuration spécifique possible sur demande / Specific configuration available on request.



PHOTOMÉTRIE / BEAM ANGLE



**TYPE :** PRE01**EMPLACEMENT :** ESCALIER SUD**A CONFIRMER SUR PROTOTYPE****ODELI** **VULCANO 200**

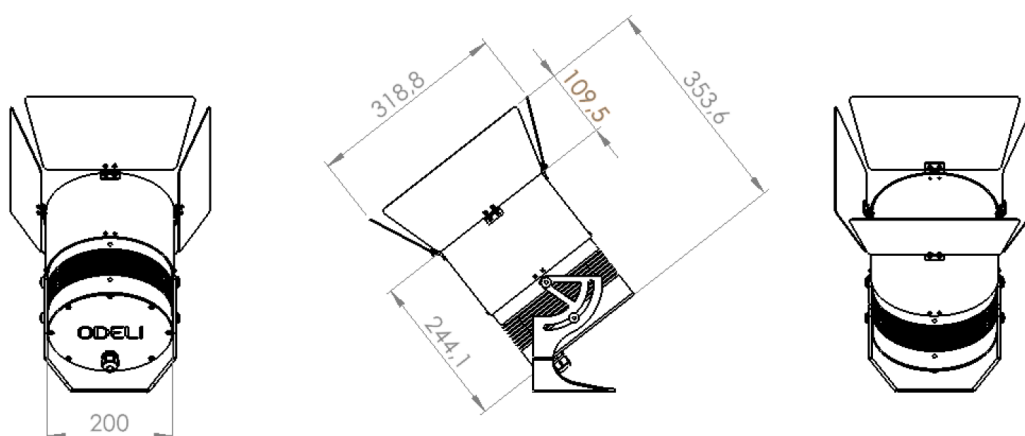
Philharmonie

MADE IN FRANCE

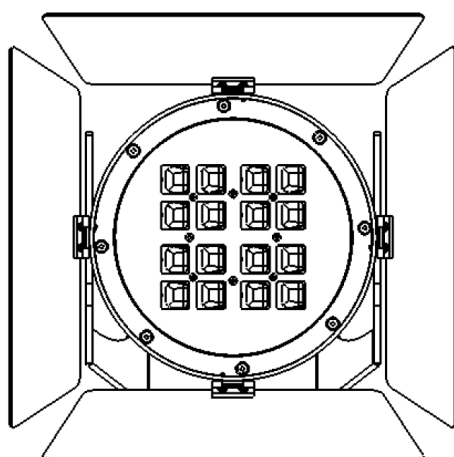


DESSIN DIMENSIONNEL / DIMENSIONAL DRAWING

Unité / Unit : mm



VUES COMPLÉMENTAIRES / COMPLEMENTARY VIEWS



05/03/2025

TYPE : PRE02/03  
EMPLACEMENT : ESCALIER SUD

A CONFIRMER SUR PROTOTYPE

MADE IN FRANCE

ODEU  
KRAKEN

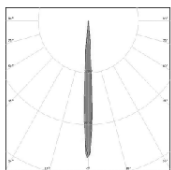


TECHNICAL DATA

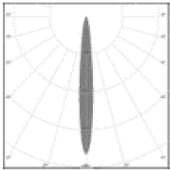
Power	12W
Lumen Output	950lm
Mounting	Projector Surface Mounted
Configuration	-
Color temperature	<input type="checkbox"/> 2200K <input type="checkbox"/> 2700K <input checked="" type="checkbox"/> 3000K
Beam angle	<input type="checkbox"/> 6° <input type="checkbox"/> 10° <input checked="" type="checkbox"/> 24° <input checked="" type="checkbox"/> Elliptical
Input	36VDC
Control	DALI On remote power supply
Material	Aluminium
Finish Adaptor / Body	<input type="checkbox"/> Black Anodized <input type="checkbox"/> Grey Anodized <input type="checkbox"/> Custom RAL
Weight	500g
CRI	90
Ingress Protection Rating	IP65
Electrical safety rating	Class III



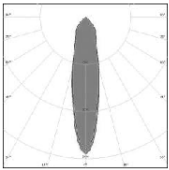
BEAM ANGLE



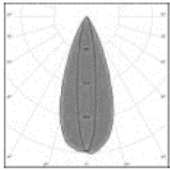
6°



10°



24°



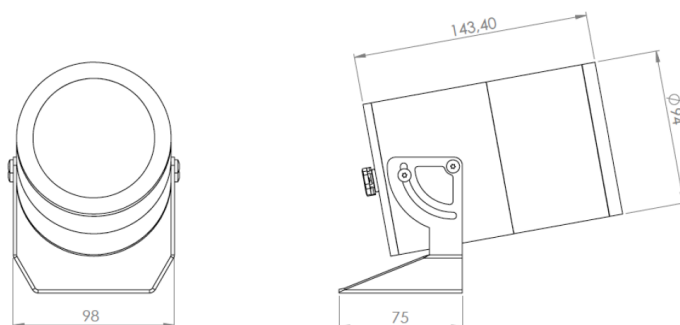
Elliptical

**TYPE :** PRE02/03**EMPLACEMENT :** ESCALIER SUD**A CONFIRMER SUR PROTOTYPE**

MADE IN FRANCE

**ODEU** KRAKEN

DIMENSIONAL DRAWING



05/03/2025

**CIRCULATIONS**



TYPE : **ST02**  
EMPLACEMENT : CIRCULATIONS

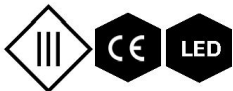
**A CONFIRMER SUR PROTOTYPE**

ODELI  
EYE  
For flat handrails

MADE IN FRANCE



DONNÉES TECHNIQUES / TECHNICAL DATA

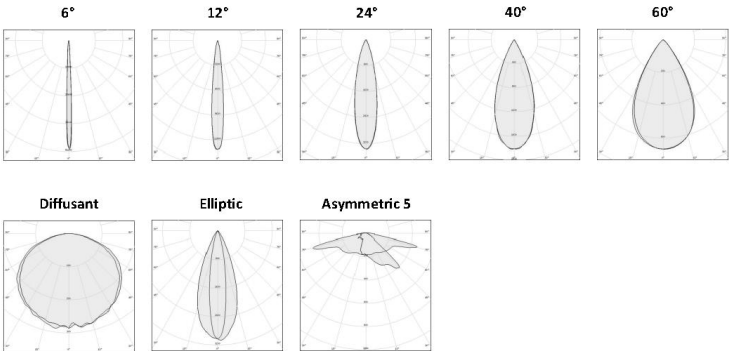


Puissance / Power	1,2W		
Température de Couleur / Color Temperature	<input type="checkbox"/> 1800k	<input type="checkbox"/> 2200K	<input type="checkbox"/> 2700K <input checked="" type="checkbox"/> 3000K <input type="checkbox"/> 3500K
Flux Source / Flux Source	96lm	144lm	168lm
Pilotage / Control	<input type="checkbox"/> PWM <input type="checkbox"/> DMX <input type="checkbox"/> 0-10V		
Angle d'éclairage / Beam Angle	<input type="checkbox"/> 6° <input type="checkbox"/> 12° <input type="checkbox"/> 24° <input type="checkbox"/> 40° <input type="checkbox"/> 60° <input type="checkbox"/> Elliptic <input type="checkbox"/> Diffusant <input checked="" type="checkbox"/> Asymmetric 5		
Alimentation / Voltage	48VDC		
IRC / CRI	80 (IRC 90 on demand)		
Matière / Material	Plastique-PMMA		
Finition / Finish	Grey		
Protection (IP - IK - Classe)	IP66 – IK10 – Classe III		
Poids / Weight	200g		

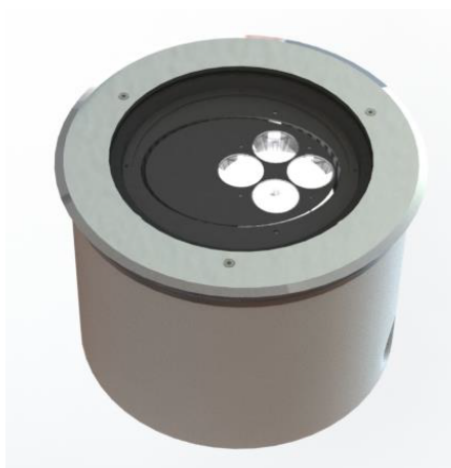
Configuration spécifique possible sur demande / Specific configuration available on request.



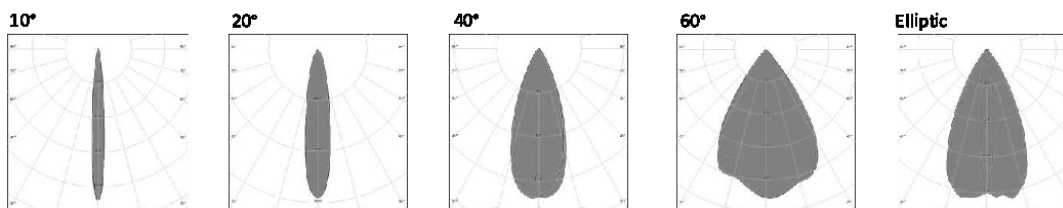
PHOTOMETRIE / BEAM ANGLE



**ENTREE PRINCIPALE**

**TYPE : UP01****EMPLACEMENT : ENTREE PRINCIPALE****A CONFIRMER SUR PROTOTYPE****ODELI**  
LED LIGHTING FACTORY**ENCASTRE 340**  
**Granada****TECHNICAL DATA**

Power	25W
Lumen output	2000lm
Mounting	Ground recessed
Color temperature	<input type="checkbox"/> 2700K <input checked="" type="checkbox"/> 3000K <input type="checkbox"/> 4000K <input type="checkbox"/> RGBW <input type="checkbox"/> TW2700K-4000K
CRI	90
Beam angle	<input type="checkbox"/> 12° <input checked="" type="checkbox"/> 24° <input type="checkbox"/> 40° <input type="checkbox"/> 60° <input type="checkbox"/> Elliptical
Input	230 VAC
Control	<input type="checkbox"/> ON/OFF <input checked="" type="checkbox"/> DALI <input type="checkbox"/> DMX <input type="checkbox"/> Casambi
Ingress Protection Rating	IP68 – Classe I
Material	Aluminium
Finish exterior	Brushed
Weight	6kg

**BEAM ANGLE****Other on demand**

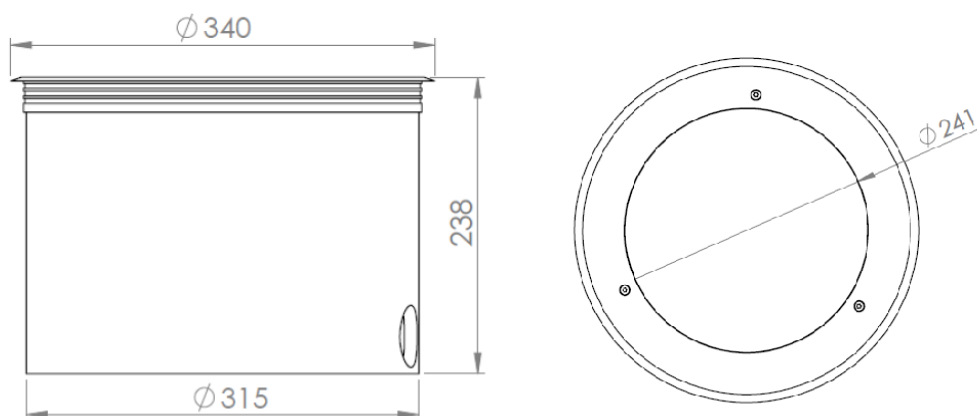
**TYPE : UP01****EMPLACEMENT : ENTREE PRINCIPALE****A CONFIRMER SUR PROTOTYPE**

**ODEU**  
LED LIGHTING FACTORY

# ENCASTRE 340 Granada



DIMENSIONAL DRAWING (mm)

**Cable outlet for ON-OFF / CASAMBI:**

- Cable 3G1,5 1m
- Other on demand

**Cable outlet for DMX:**

- Cable Hybrid 230V+DMX 1m
- Other on demand

**Cable outlet for DALI:**

- Cable 5G1,5 1m
- Other on demand

**TYPE :** PRE04

**EMPLACEMENT :** ENTREE PRINCIPALE

**A CONFIRMER SUR PROTOTYPE**

**DESIGN LUMINAIRE A DETERMINE PAR AJN**

ODELI **ACCENT 54 IP**

LED CE



TYPE : **PRE04**  
EMPLACEMENT : ENTREE PRINCIPALE

**A CONFIRMER SUR PROTOTYPE**

# ODELI ACCENT 54 IP

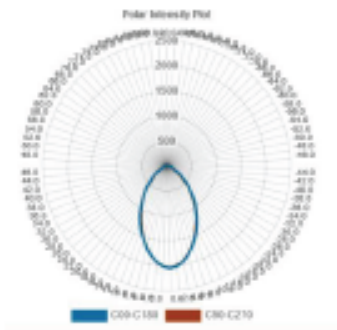


## SPECIFICATIONS

Puissance consommée	8,5W / spot
Puissance d'éclairage	788lm
Configuration	Spot su mât
Température de couleur	3000 °K
Angle d'éclairage	35°
Alimentation	48 VDC
Pilotage	DALI
Matériaux	Aluminium
Finition	Thermolaquage RAL au choix
Poids	1,3 kg
IRC	>90
Protection	IP 65 – Classe II

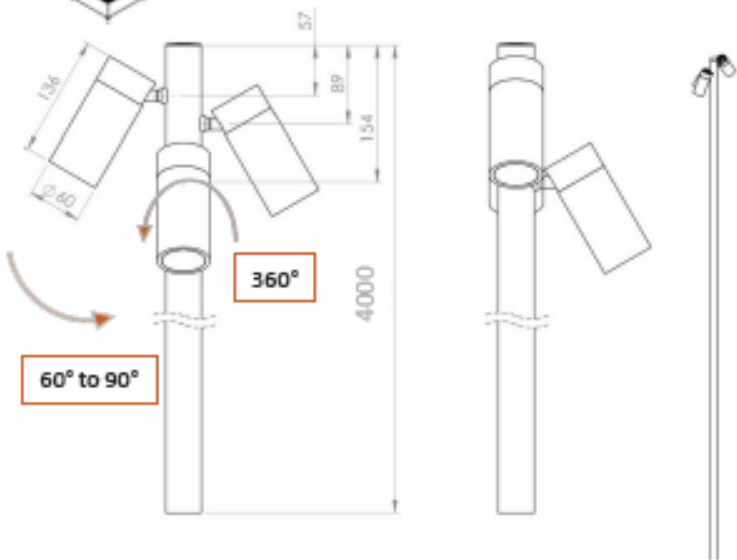


## PHOTOMETRIE



## DESSIN DIMENSIONNEL

Unité: mm



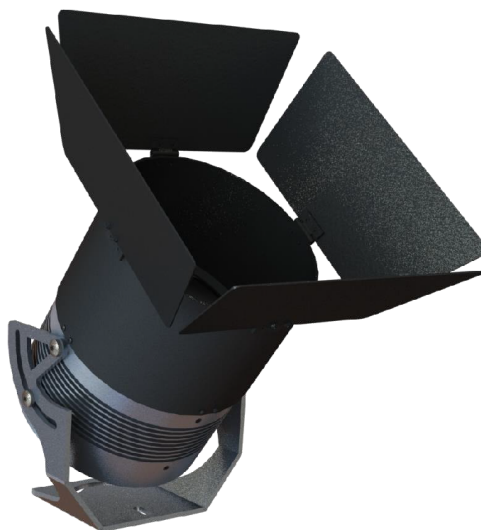
**PARVIS SUD**

**TYPE : PRE01****EMPLACEMENT : PARVIS SUD****A CONFIRMER SUR PROTOTYPE**

# ODEU VULCANO 200

Philharmonie

MADE IN FRANCE



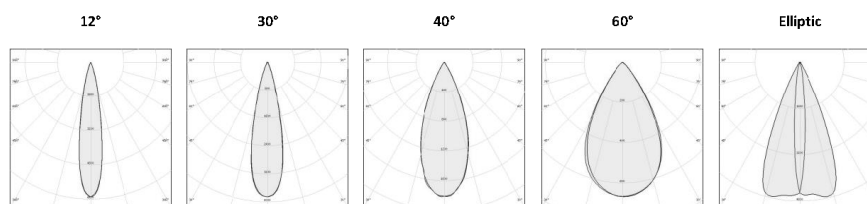
## DONNÉES TECHNIQUES / TECHNICAL DATA

	Version Monochrome	Version RGBW	Version TW
Température de Couleur / Color Temperature	<input type="checkbox"/> 2200K <input type="checkbox"/> 2700K <input checked="" type="checkbox"/> 3000K	<input type="checkbox"/> RGBW X000K	<input type="checkbox"/> TW 2200K-5000K
Puissance / Power	50W	50W	50W
Flux Source / Flux Source	6000lm	1800lm	6000lm
Angle d'éclairage / Beam Angle	<input type="checkbox"/> 12° <input checked="" type="checkbox"/> 30° <input type="checkbox"/> 40° <input type="checkbox"/> 60° <input type="checkbox"/> Elliptic		
Pilotage / Control	<input checked="" type="checkbox"/> DALI <input type="checkbox"/> DMX-RDM <input type="checkbox"/> CASAMBI		
Alimentation / Voltage	230VAC		
IRC / CRI	80		
Matériau / Material	Aluminium		
Finition / Finish	<input type="checkbox"/> Grey anodized <input type="checkbox"/> Powder coated (RAL xxxx)		
Protection (IP - IK - Classe)	IP66		
Poids / Weight	5kg		

Configuration spécifique possible sur demande / Specific configuration available on request.



## PHOTOMÉTRIE / BEAM ANGLE





**TYPE :** PRE01**EMPLACEMENT :** PARVIS SUD**A CONFIRMER SUR PROTOTYPE****ODELI** **VULCANO 200**

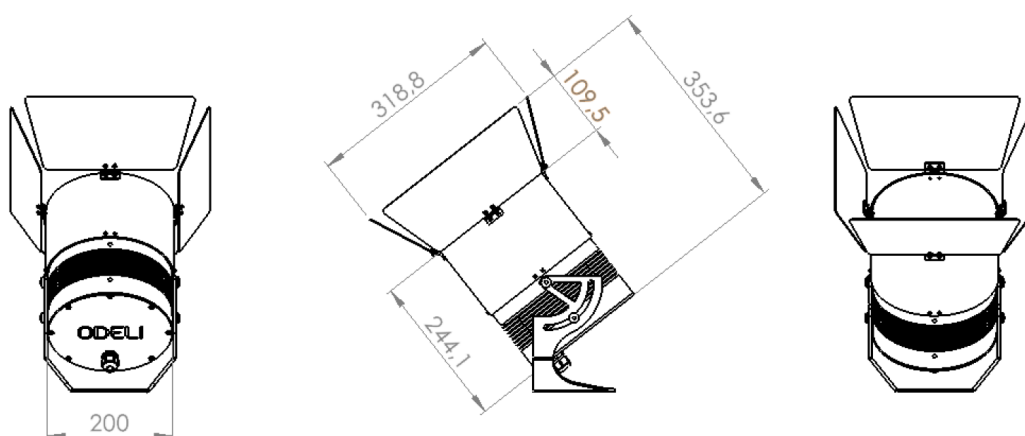
Philharmonie

MADE IN FRANCE

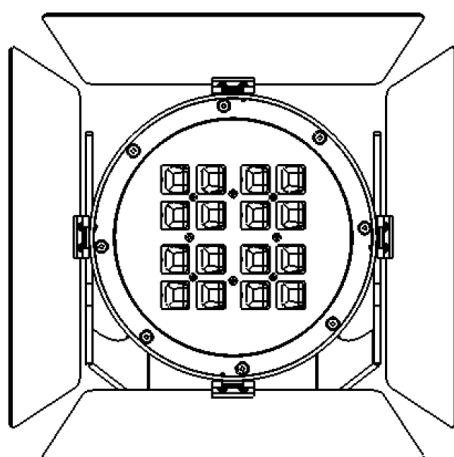


DESSIN DIMENSIONNEL / DIMENSIONAL DRAWING

Unité / Unit : mm



VUES COMPLÉMENTAIRES / COMPLEMENTARY VIEWS



05/03/2025

**ENTREE DES ENFANTS**

**TYPE :** PR20**A CONFIRMER SUR PROTOTYPE****EMPLACEMENT :** ENTREE DES ENFANTS

# ODELI Spot accent 90 – PR20

40° - 20W 2000lm

LED CE



**TYPE:** PR20

### EMPLACEMENT : ENTREE DES ENFANTS

## A CONFIRMER SUR PROTOTYPE

**Spot accent 90 – PR20**  
40° - 20W 2000lm

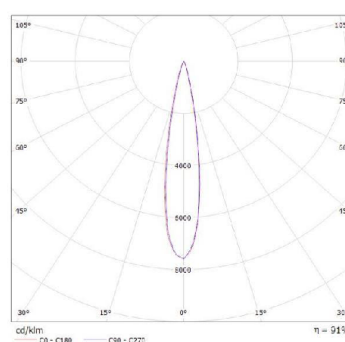


## SPECIFICATIONS

Puissance consommée	20W
Puissance d'éclairage	2000lm
Configuration	Applique
Température de couleur	3000 °K
Angle d'éclairage	20°
Alimentation	48 VDC - Driver déporté
Pilotage	DALI
Matériaux	Aluminium
Finition	Thermolaquage RAL au choix
Poids	1 kg
IRC	>90
Protection	IP 20
Accessoires	Circular louvre

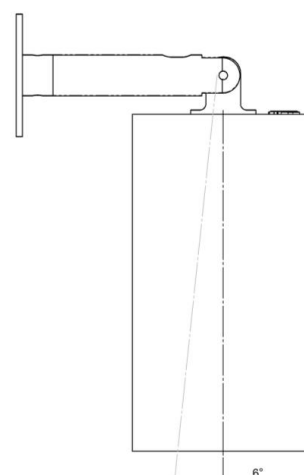
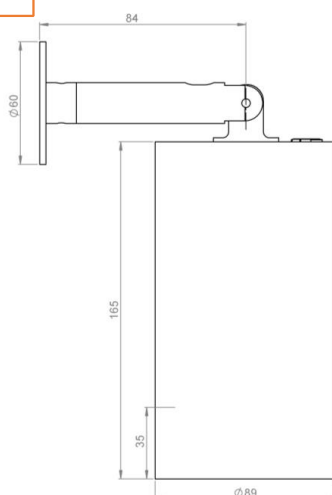
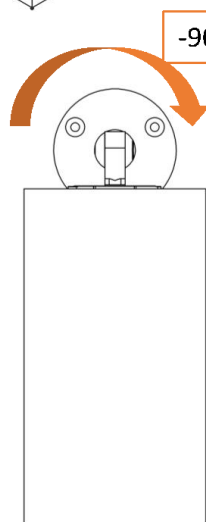


## PHOTOMETRIE



## DESSIN DIMENSIONNEL

Unité: mm



## ACCESSOIRES

Circular louvre



-6 to 90°